

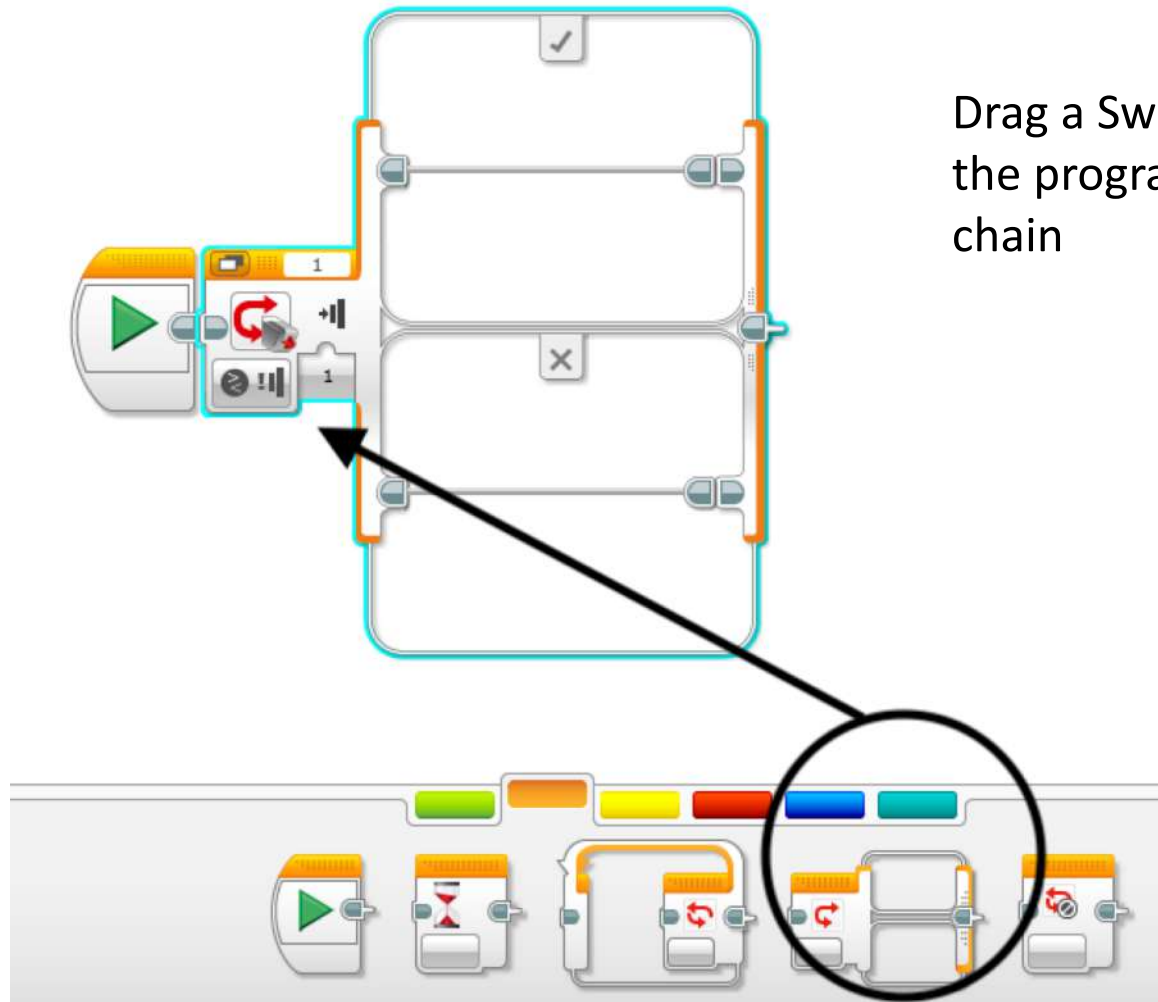


WERKLUND SCHOOL OF EDUCATION

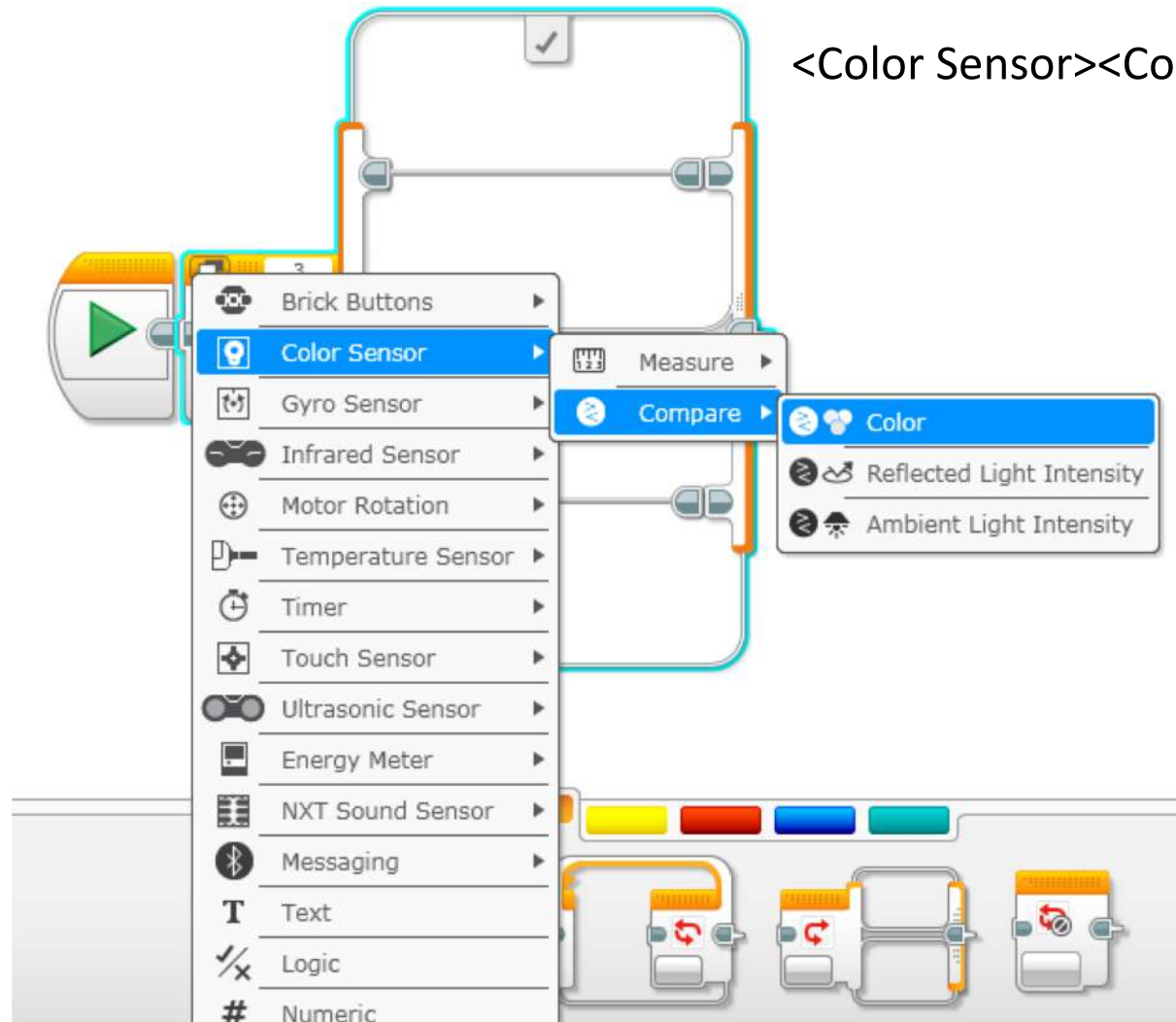
PROGRAMMING SENSORS

Colour Sensor on a Laptop

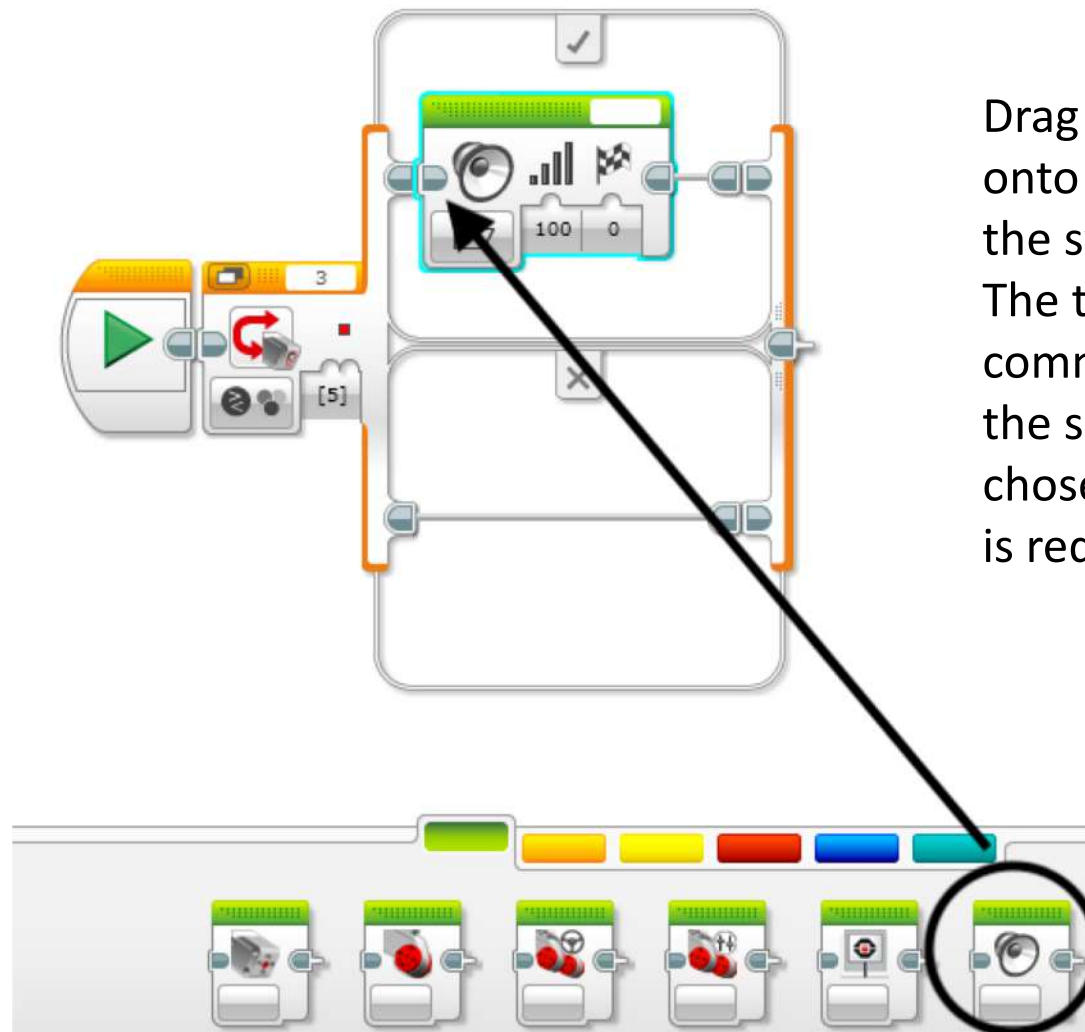
Dr. Krista Francis
February 20, 2018



Choose Colour Sensor

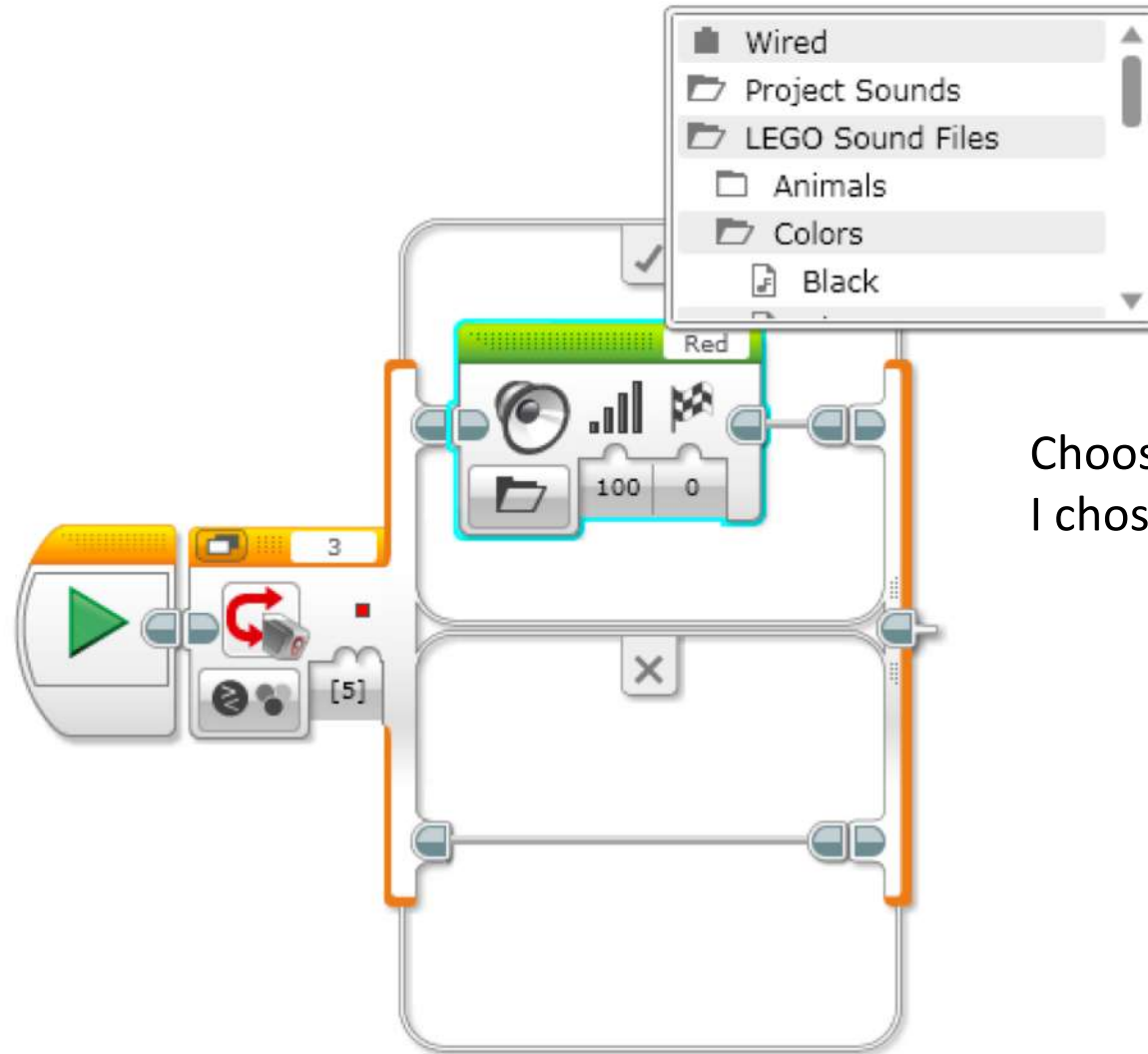


<Color Sensor><Compare><Color>

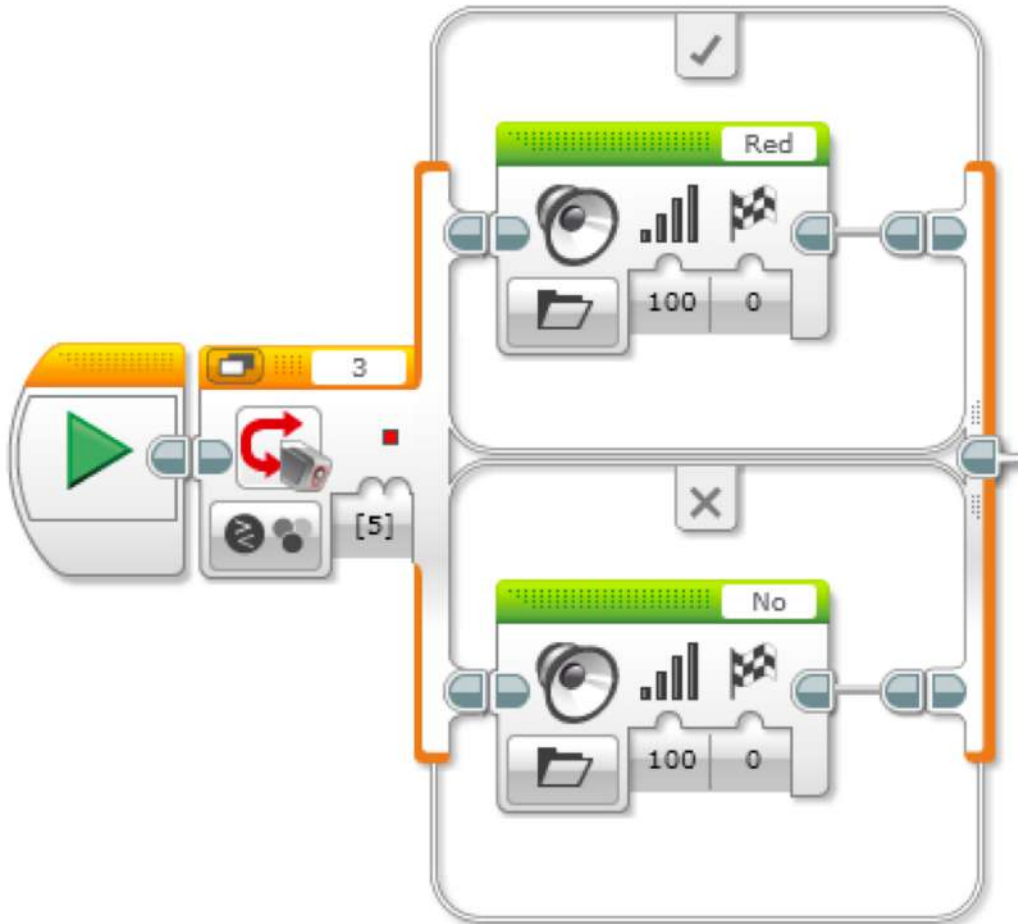


Drag a Sound Block onto the top chain of the switch.

The top are the commands for when the sensor sees the chosen color – here it is red



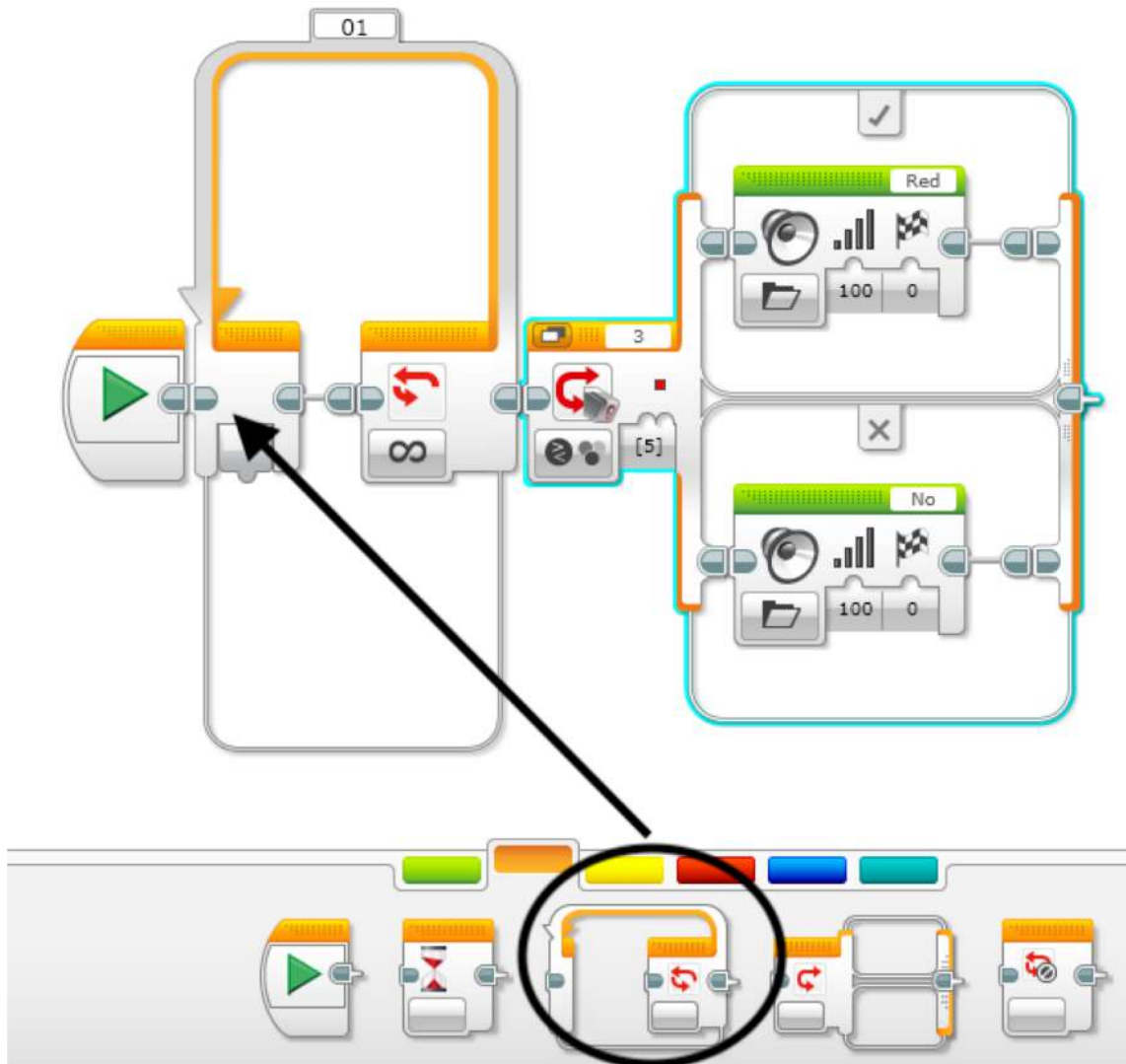
Choose a sound like 'yes'
I chose 'Red'



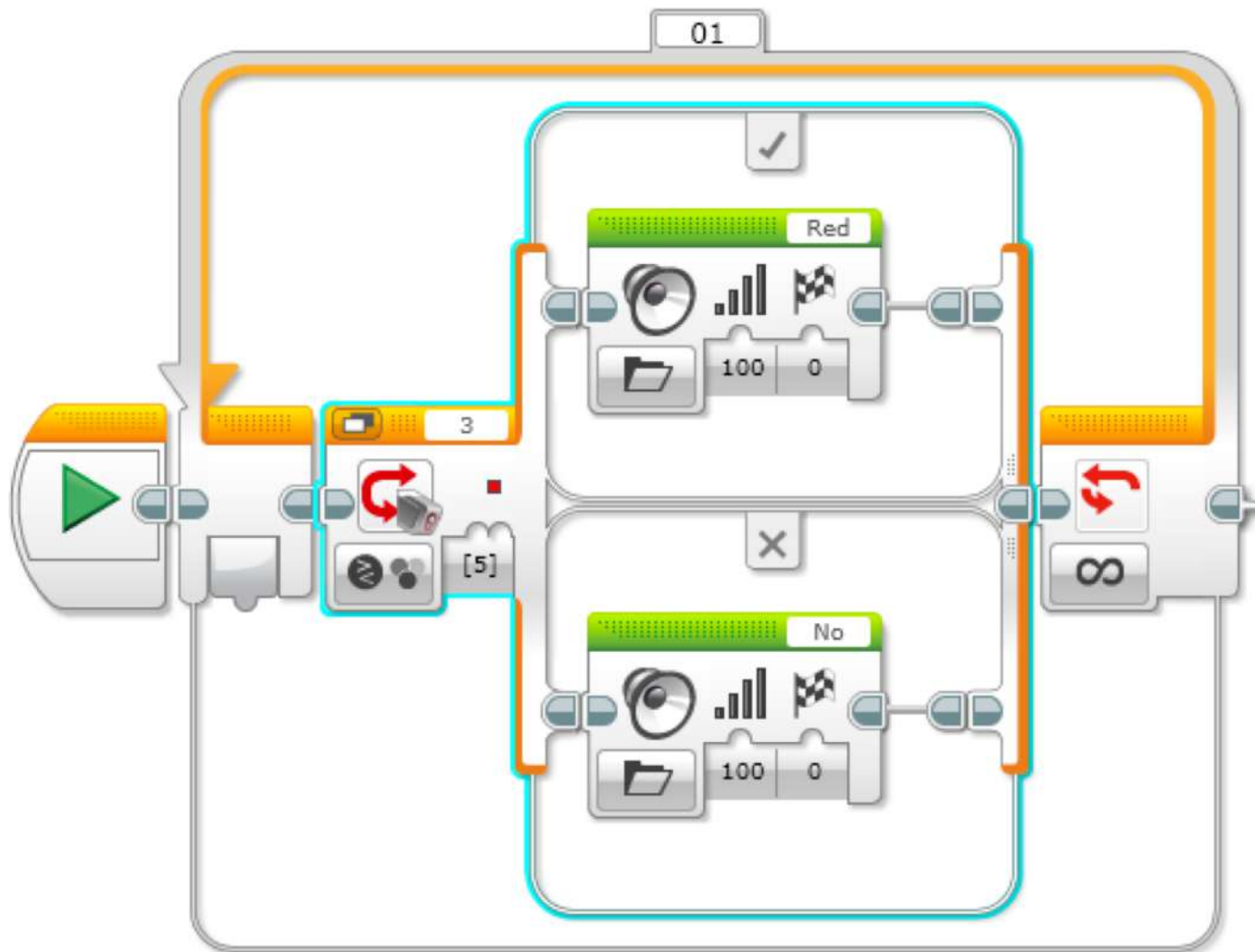
Choose a sound for when the colour sensor does not detect the sound

Now this program will test for the colour only once. And it will be as fast as electricity can travel. You might not even be able to hear the sound.

How can you make the sensor test for the colour over and over again?

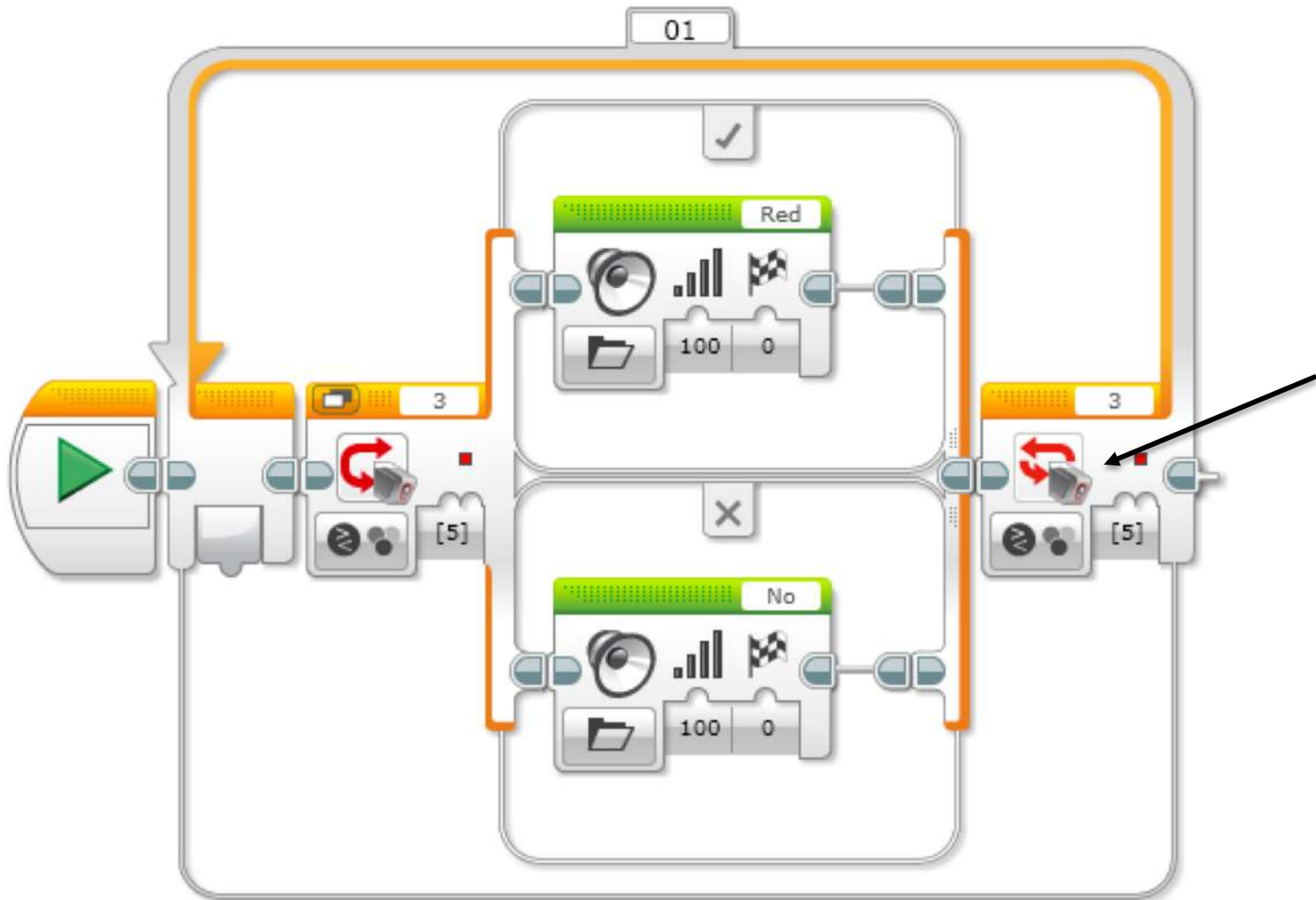


Drag an Loop Block to the programming chain. Place it before the Switch Block. The block will be set to infinity – so it does not stop



Drag your Switch Block inside the loop.

Test your program with your robot.



Stop Loop on Red

