



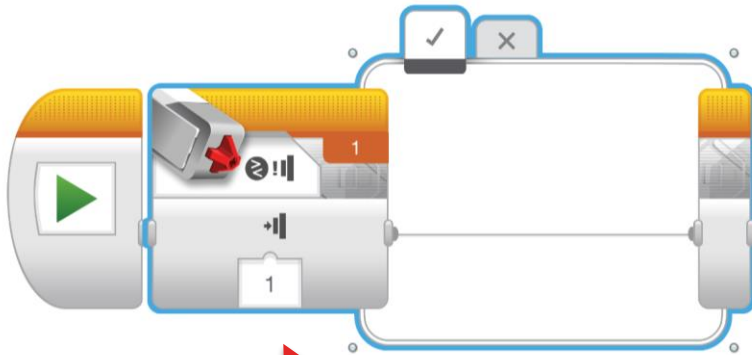
UNIVERSITY OF
CALGARY

WERKLUND SCHOOL OF EDUCATION

PROGRAMMING SENSORS

Colour Sensor on an iPad

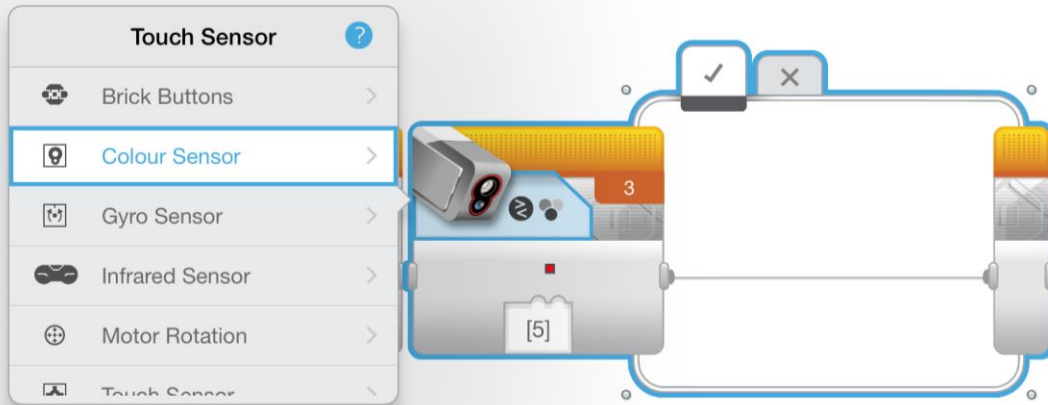
Dr. Krista Francis
February 20, 2018



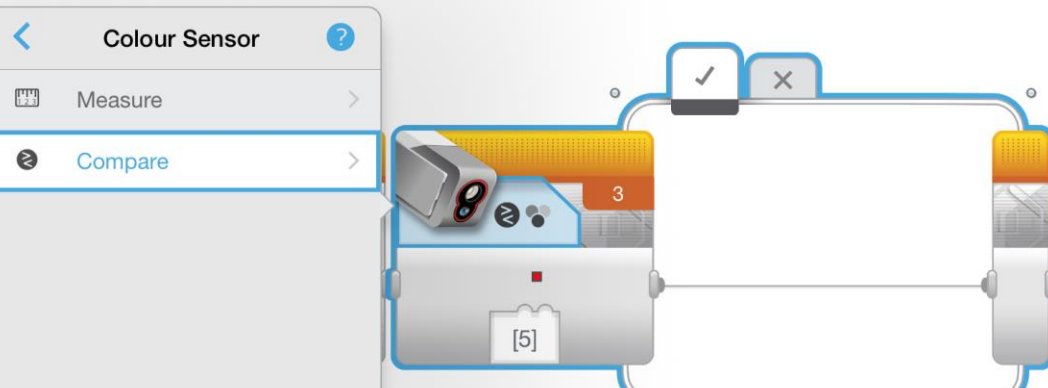
Drag a Switch Block to
the programming
chain



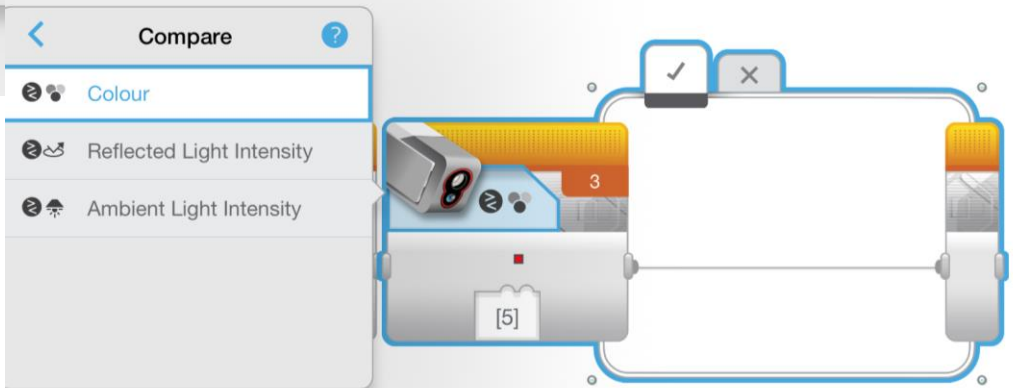
Choose Colour Sensor



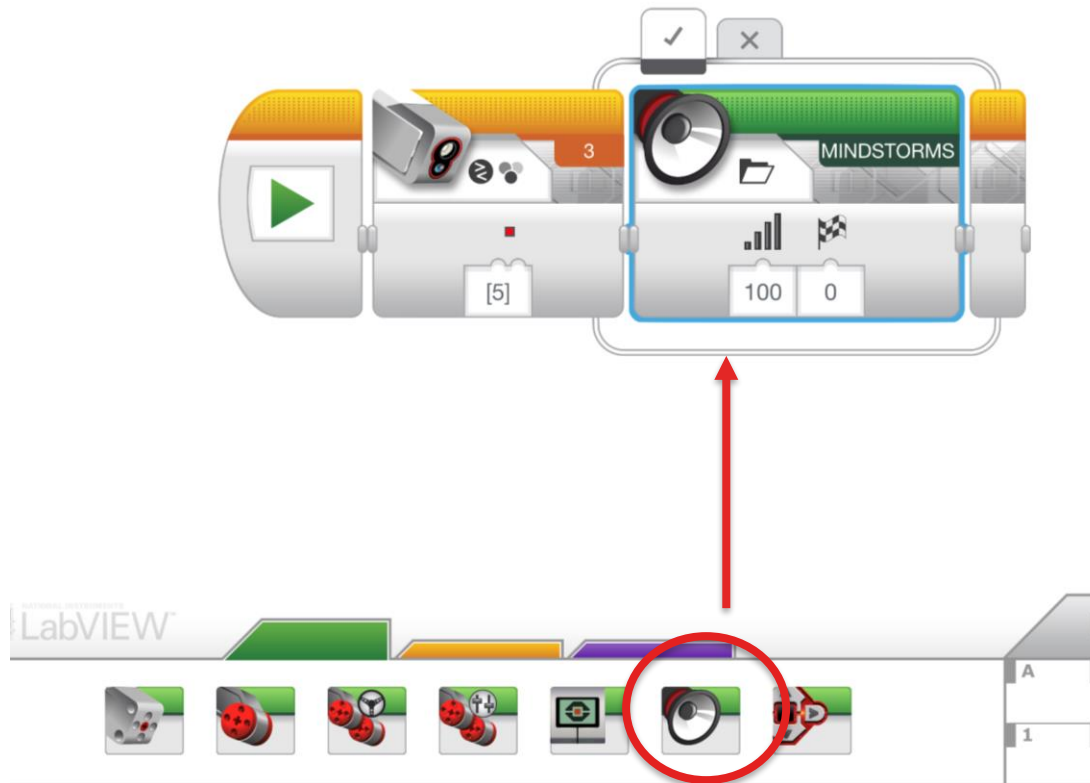
<Color Sensor>



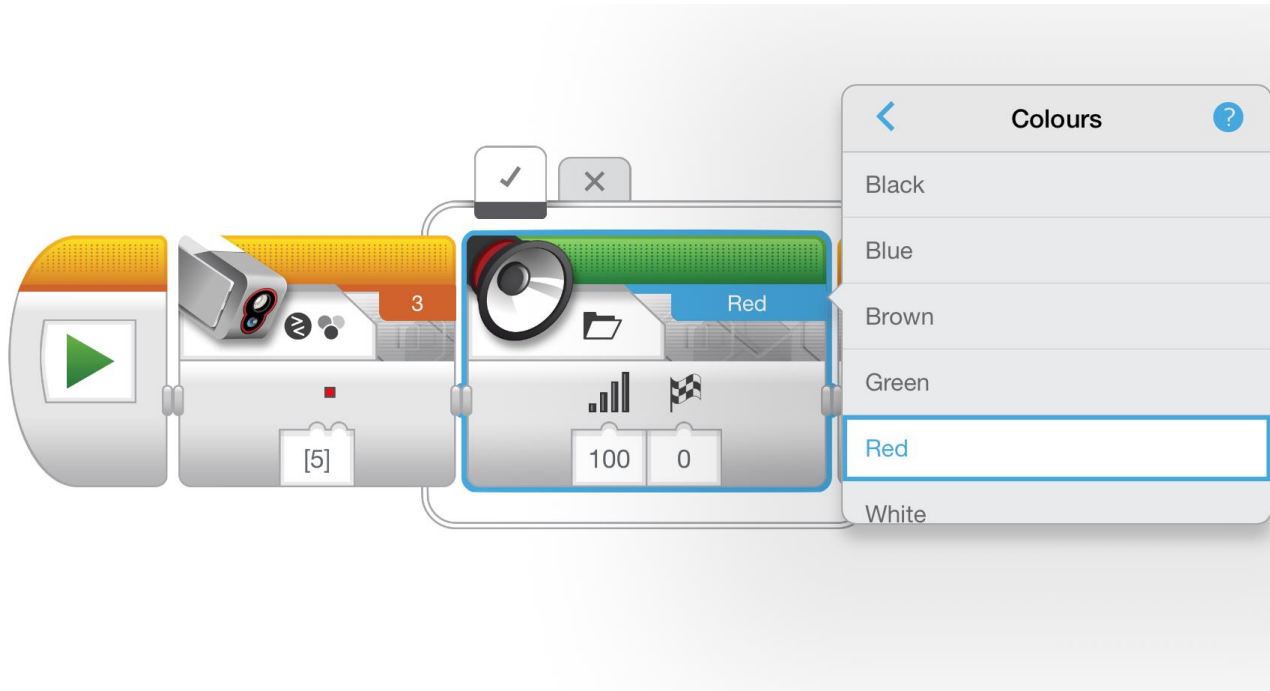
<Compare>



<Color>

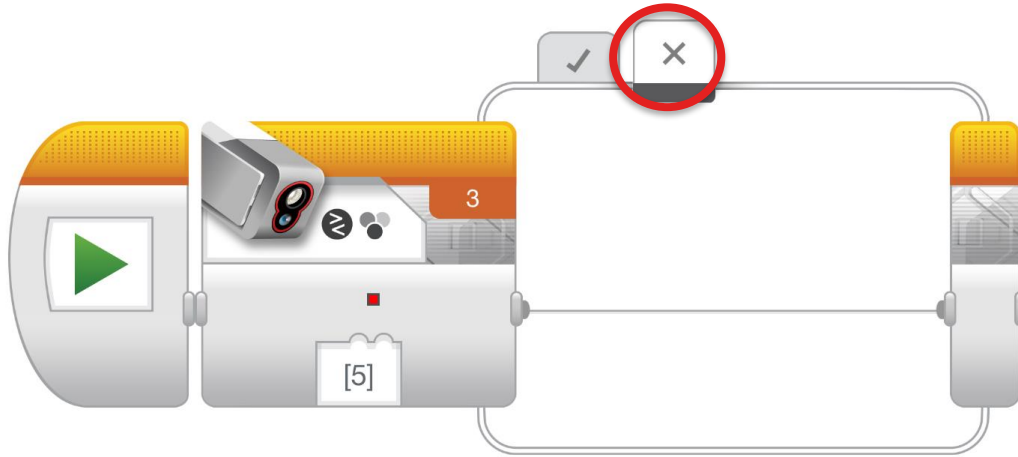


Drag a Sound Block onto the top chain of the switch.
The top are the commands for when the sensor sees the chosen color – here it is red

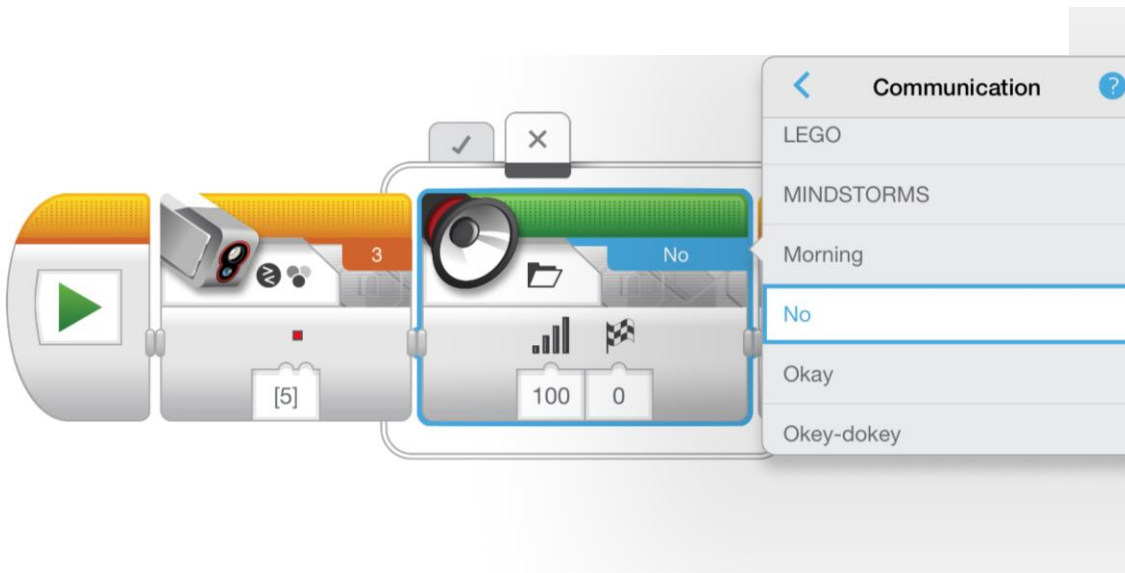


Choose a sound like 'yes'
I chose 'Red'

Choose Sound for Non Detection

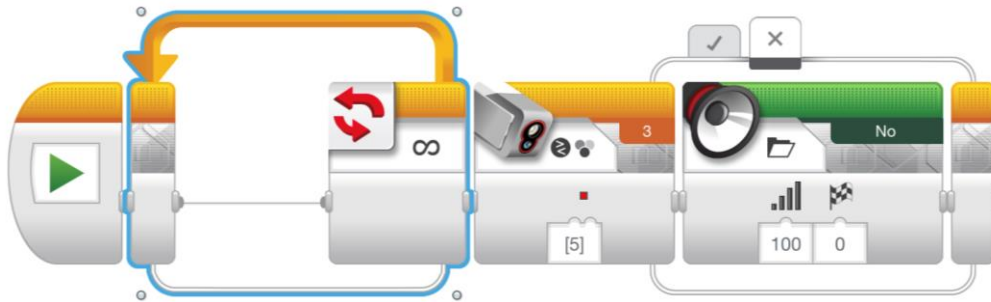


Choose a sound for when the colour sensor does not detect the sound

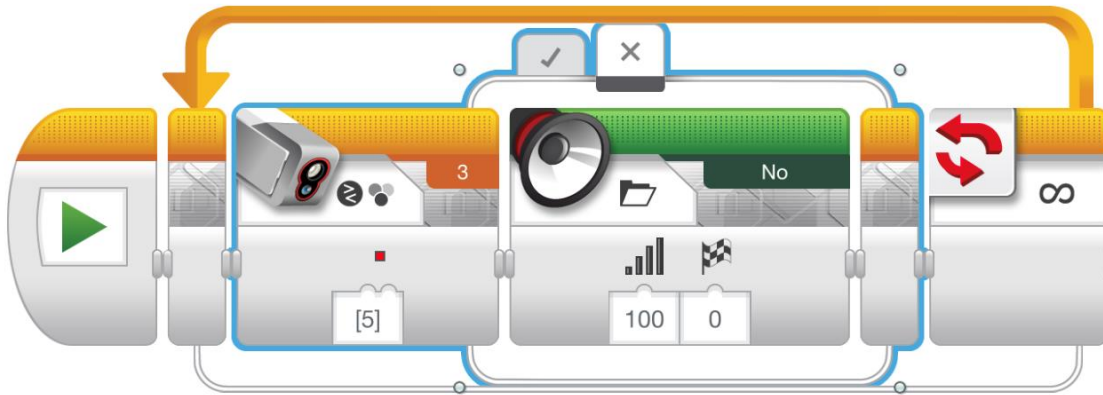


Now this program will test for the colour only once. And it will be as fast as electricity can travel. You might not even be able to hear the sound.

How can you make the sensor test for the colour over and over again?



Drag an Loop Block to the programming chain. Place it before the Switch Block. The block will be set to infinity – so it does not stop



Drag your Switch
Block inside the loop.

Test your program
with your robot.

