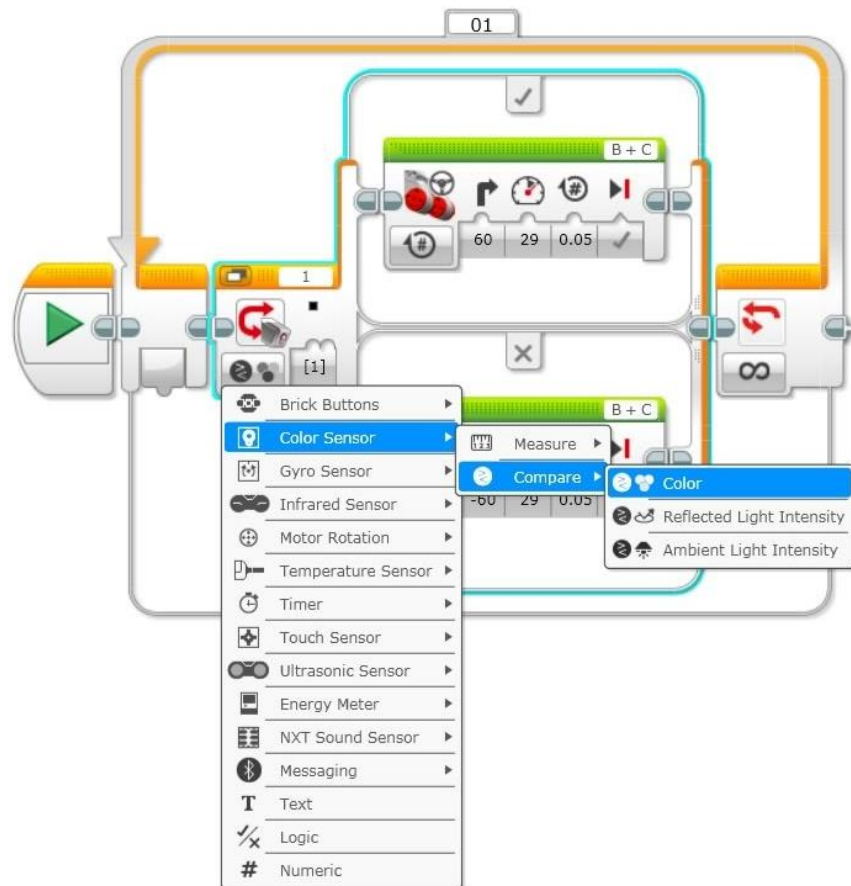


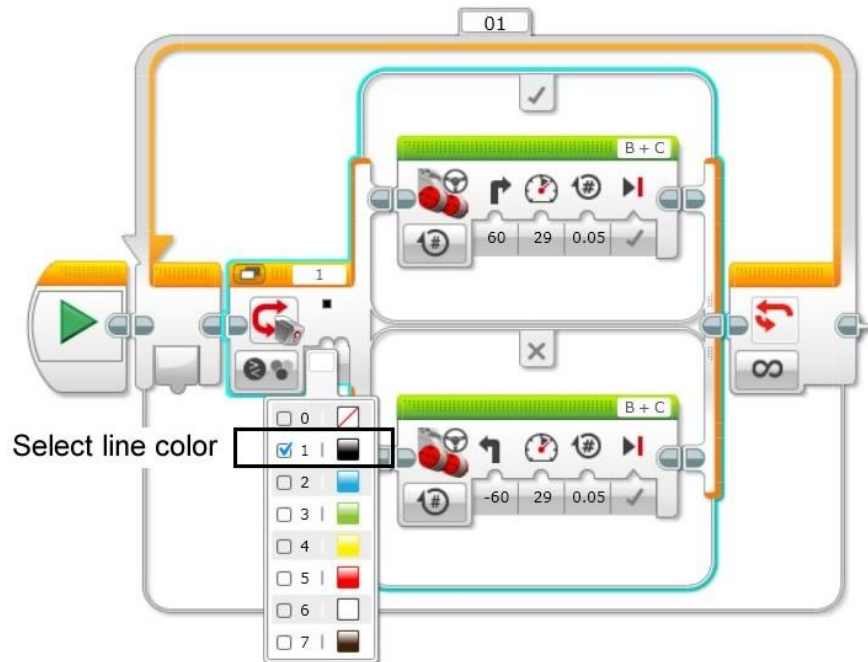
Moving along a Black Line

Color Sensor

- 1) First, put a <Switch Block> inside a <Loop Block>.
Add two <Move Steering Blocks>.
Set the <Switch Block> for the <Color Sensor> to <Compare> <Color>.
See figure below:



- Next, select the color of the line you wish to follow. Make sure only the color you want is selected.



- Then, fine-tune the motors' steering, rotations, and power until the robot moves along the line as desired. Note this is contextual and may take some adjustments for the robot to follow the line.

